

Tour de Gruene 2009 Tour

9.6 Mile Option

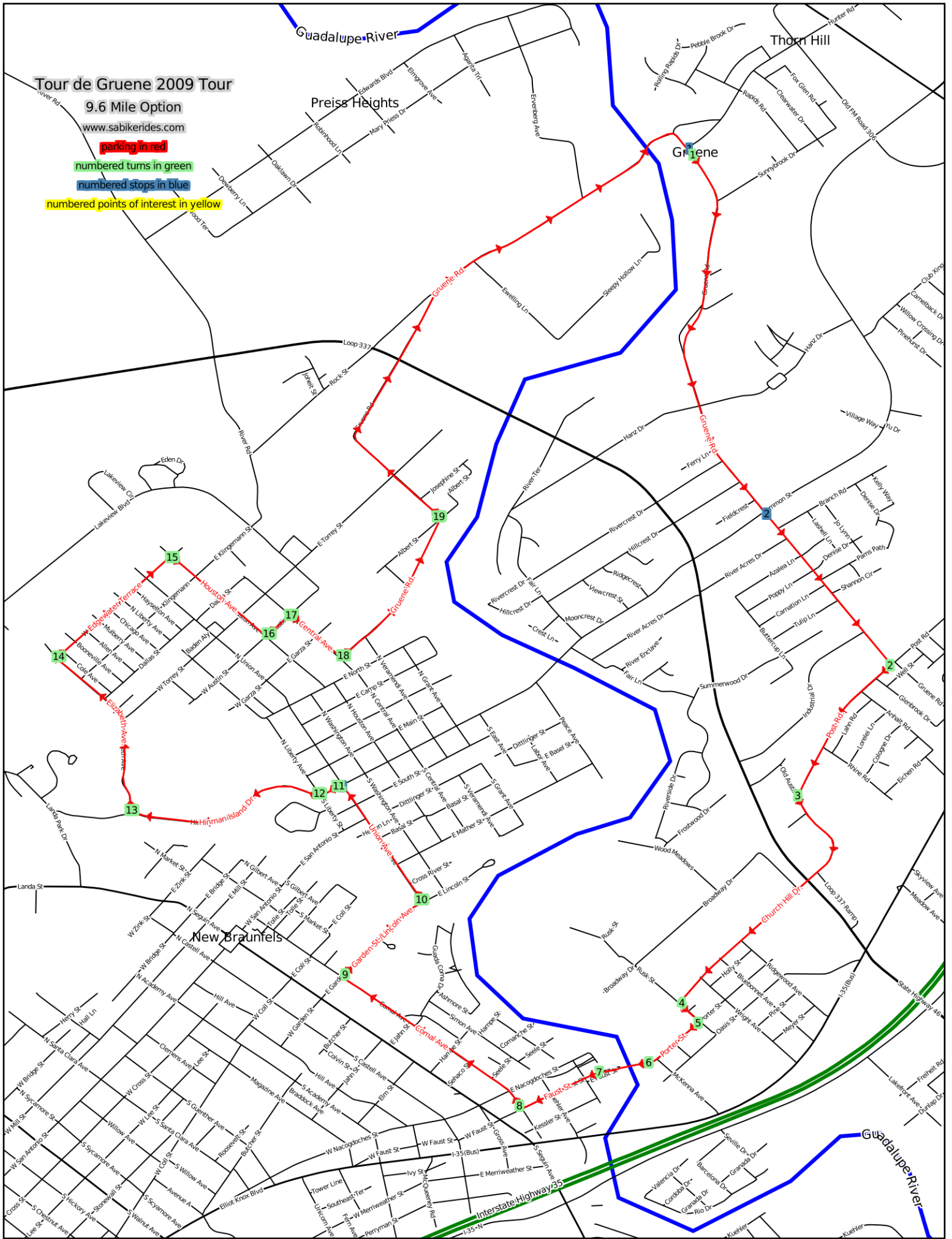
www.sabikerides.com

parking in red

numbered turns in green

numbered stops in blue

numbered points of interest in yellow



<i>Landmark</i>	<i>Distance</i>	<i>Description</i>	<i>Length</i>
Parking	0.00	LEFT onto Gruene Rd.	1.78
S - 1	0.0	There are many bars and restaurants in and surrounding Gruene.	conv. store
S - 2	1.2	There is a convenience store at the corner of Gruene Rd. and Common St.	conv. store
T - 1	1.78	RIGHT onto Post Rd.	0.48
T - 2	2.26	LEFT onto Church Hill Dr.	0.83
T - 3	3.09	LEFT onto Rusk Ave.	0.08
T - 4	3.17	RIGHT onto Porter St.	0.18
T - 5	3.35	STRAIGHT onto pedestrian bridge	0.14
T - 6	3.49	STRAIGHT onto Faust St.	0.25
T - 7	3.73	RIGHT onto Comal Ave.	0.63
T - 8	4.36	RIGHT onto Garden St.	0.31
T - 9	4.68	LEFT onto Union Ave.	0.42
S - 3	5.1	There is a convenience store at the corner of Union Ave. and Common St.	conv. store
T - 10	5.10	LEFT onto Common St.	0.06
T - 11	5.16	STRAIGHT onto Hinman Island Dr.	0.56
T - 12	5.71	RIGHT onto Elizabeth Ave.	0.55
T - 13	6.26	RIGHT onto Edgewater Terrace	0.44
T - 14	6.70	RIGHT onto Houston Ave.	0.36
T - 15	7.06	LEFT onto Austin St.	0.08
T - 16	7.14	RIGHT onto Central Ave.	0.19
T - 17	7.33	LEFT onto Gruene Rd.	0.51
T - 18	7.84	LEFT onto Gruene Rd.	1.73
Finish	9.57	Arrive at finish!	Finish

